

USS CVN-71 VFA-97

TASK ID: CS-193274



## BASIC INFO

START TIME 9-JUL-2011 2000LT (1600UTC)  
 SCHED LAU TIME 2110LT CASE III DEP LOC N2517E5651  
 EXP REC TIME 2215LT CASE III REC LOC N2507E5714  
 HOME FREQ 305AM TCN 71X ILS 11 LINK4 336  
 WX CLD SR 0531LT SS 1912LT TEMP 26C QNH 2990 WIND 285 5KTS SEA 1 NGT VSBY

## FLIGHT

FLT	CS	T#	A/A	DLNK	LASER	WPN
Hawk 1	Hawk 1-1	211	11X	HK11	N/A	9X,2*82,2*82,120C,CT,AFLIR,2*82,2*82,9X
	Hawk 1-2	212	12X	HK12	N/A	9X,2*82,2*82,120C,CT,AFLIR,2*82,2*82,9X
	Hawk 1-3	213	13X	HK13	N/A	9X,2*82,2*82,120C,CT,AFLIR,2*82,2*82,9X
	Hawk 1-4	214	14X	HK14	N/A	9X,2*82,2*82,120C,CT,AFLIR,2*82,2*82,9X
Hawk 2	Hawk 2-1	215	21X	HK21	N/A	9X,2*82,2*82,120C,CT,AFLIR,2*82,2*82,9X
	Hawk 2-2	216	22X	HK22	N/A	9X,2*82,2*82,120C,CT,AFLIR,2*82,2*82,9X
	Hawk 2-3	217	23X	HK23	N/A	9X,2*82,2*82,120C,CT,AFLIR,2*82,2*82,9X
	Hawk 2-4	218	24X	HK24	N/A	9X,2*82,2*82,120C,CT,AFLIR,2*82,2*82,9X

## PACKAGE

FLT	AC	NO.	TASK
Hawk 1	F/A-18C	4	Carpet Bombing
Hawk 2	F/A-18C	4	Carpet Bombing

## SUPPORT

FLT	AC	TASK	A/A	CH	RMRK
Magic	E-2D	AWACS		2	Strike
Darkstar	E-3A	AWACS		3	Knight
Texaco 1	KC-135M	Refuel	53X	10	FL250
Arco 1	KC-130	Refuel	54X	11	FL170
Shell 1	S-3B	Refuel	51X	8	Standby
Shell 2	S-3B	Refuel	52X	9	Standby

## FLIGHT PLAN (HAWK 1, 2)

WP	NAME	TIME	SPEED	ALT	ACT
0	LAU	2010L			Launch
1	RV	2020L	0.60M	25K	Regroup
2	ROCK	2035L	0.75M	25K	Check In
3	IP	2038L	0.85M	5K	Fence In
4	DLA	2040L	0.90M	0.5K	Attack
5	DLB	2040L	0.90M	0.5K	Attack
6	DLC	2040L	0.90M	0.5K	Attack
7	DLD	2040L	0.90M	0.5K	Attack
8	EGR	2045L	0.75M	25K	Fence Out
9	REC	2115L	0.50M	1K	Recovery

## RADIO COMMS

CH	CODE	AGCY	FREQ
1	Green 1	Marshal	305.00
2	Red 1	Strike	264.00
3	Red 2	Knight	265.00
4	Red 3	Wizard	256.00
5	Yellow 1	Hawk 1	254.00
6	Yellow 2	Hawk 2	250.00
7	Yellow 3	Hornet	270.00
8	Violet 1	Shell 1	257.00
9	Violet 2	Shell 2	255.00
10	Violet 3	Texaco 1	262.00
11	Violet 4	Arco 1	259.00
12	Orange 1	Devil	268.00
13	Orange 2	Chevy	269.00
14	Orange 3	Check	260.00
15	Blue 1	Raven	263.00
16	Blue 2	Dodge	261.00
17	Blue 3	Ford	267.00
18	Indigo 1	Trek	251.00
19	Indigo 2	Viper	253.00
20	Indigo 3	Colt	266.00

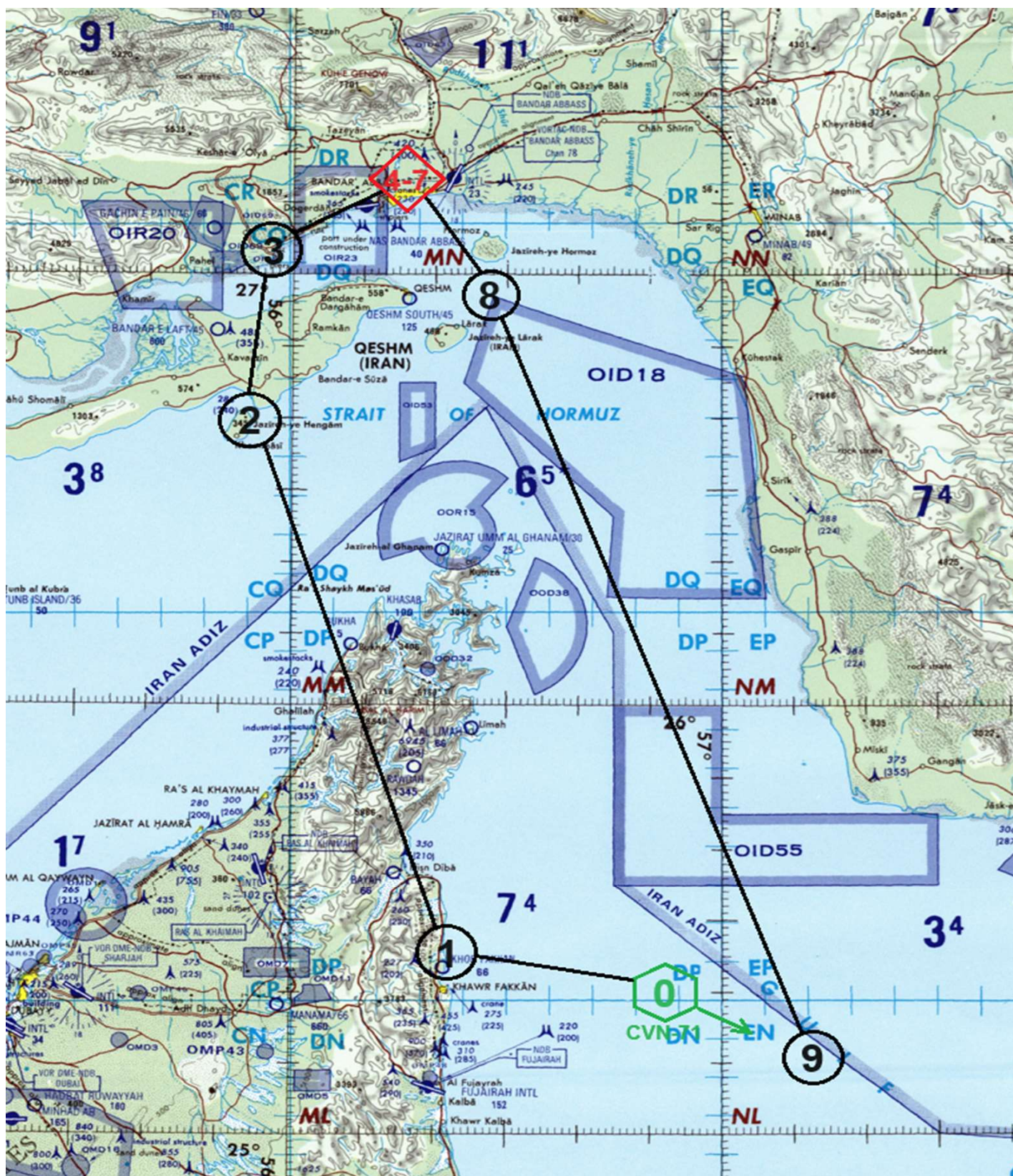
## ALT AFLD

AFLD	FREQ	COOR
Fujairah	124.350	N26°11' E56°14'
Khasab	118.150	N25°39' E57°48'
B.Abbas	118.150	N25°39' E57°48'





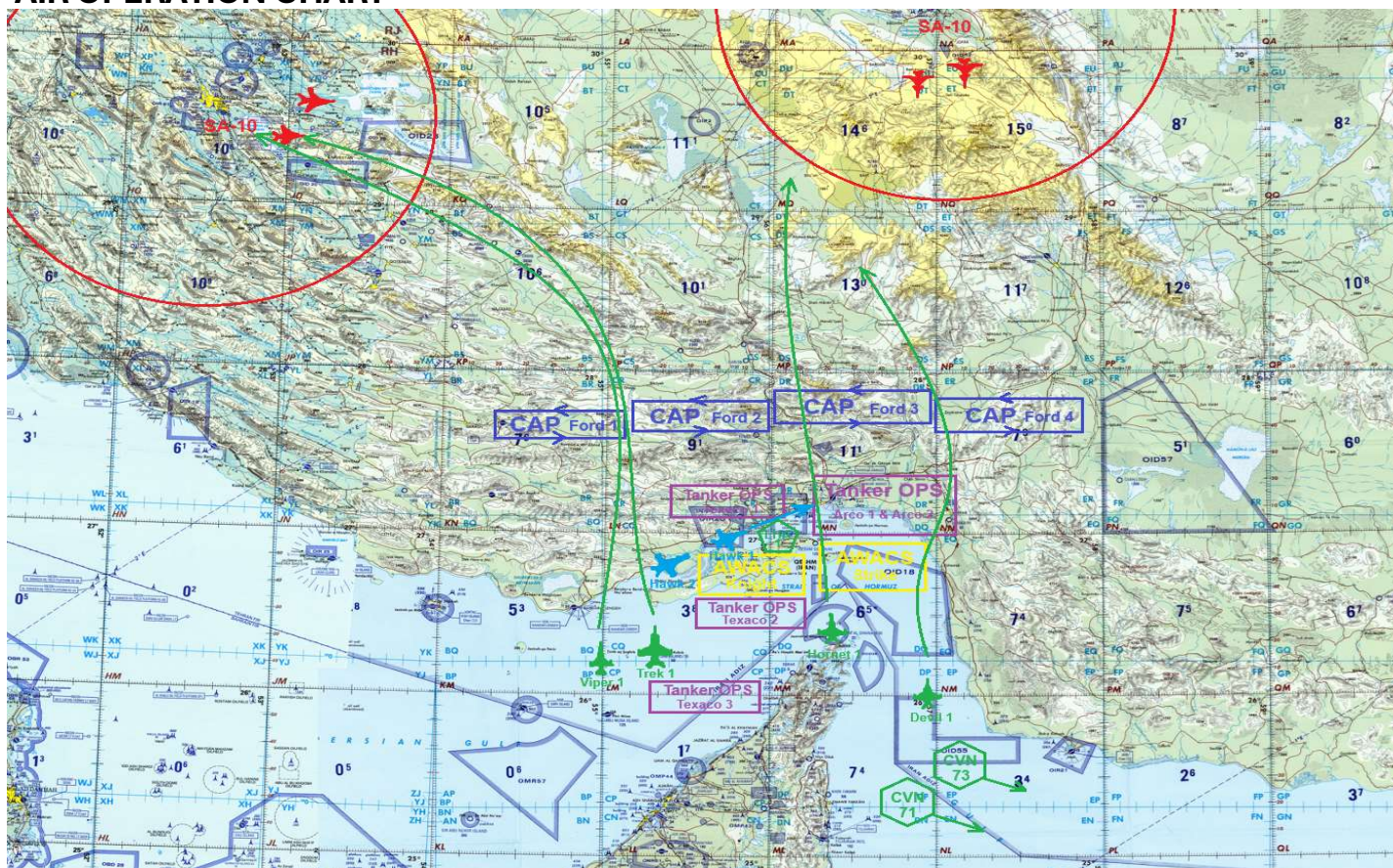
## FLIGHT PLAN



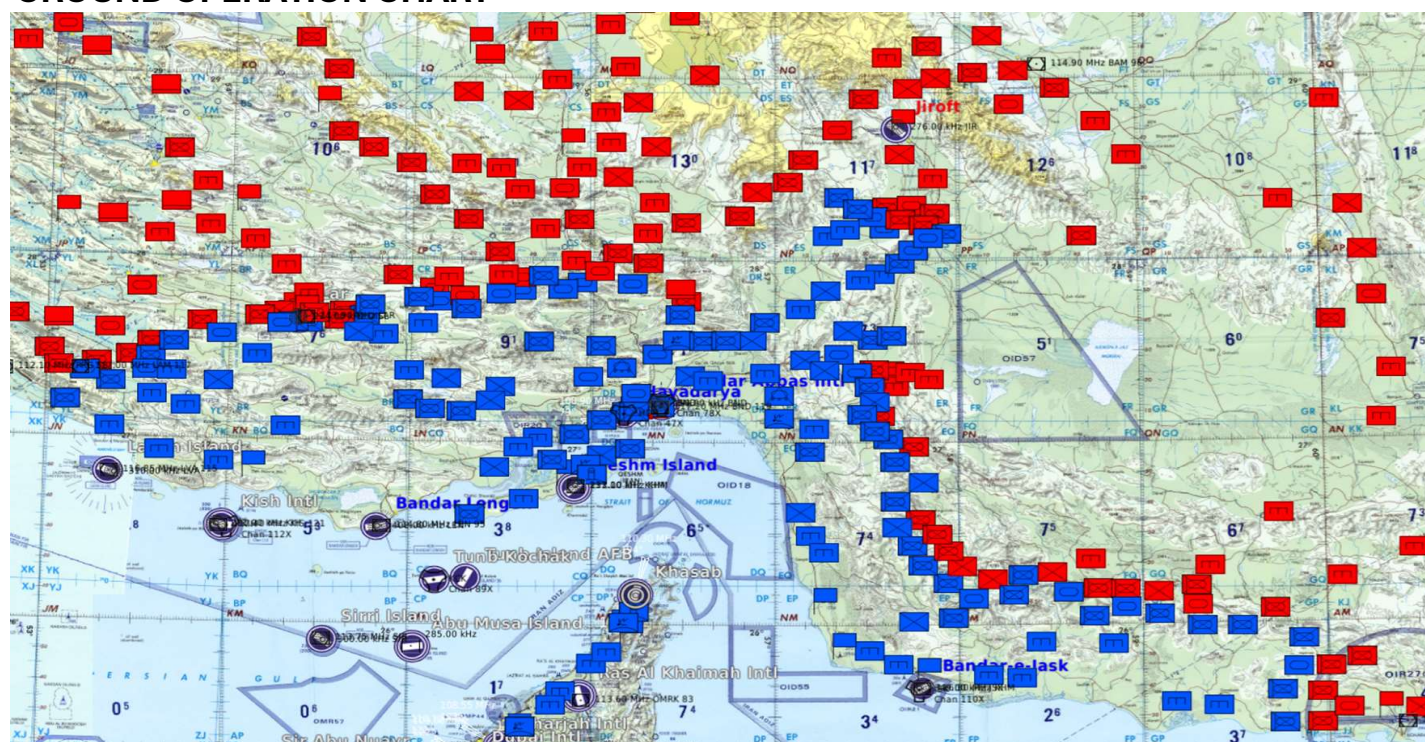




## AIR OPERATION CHART



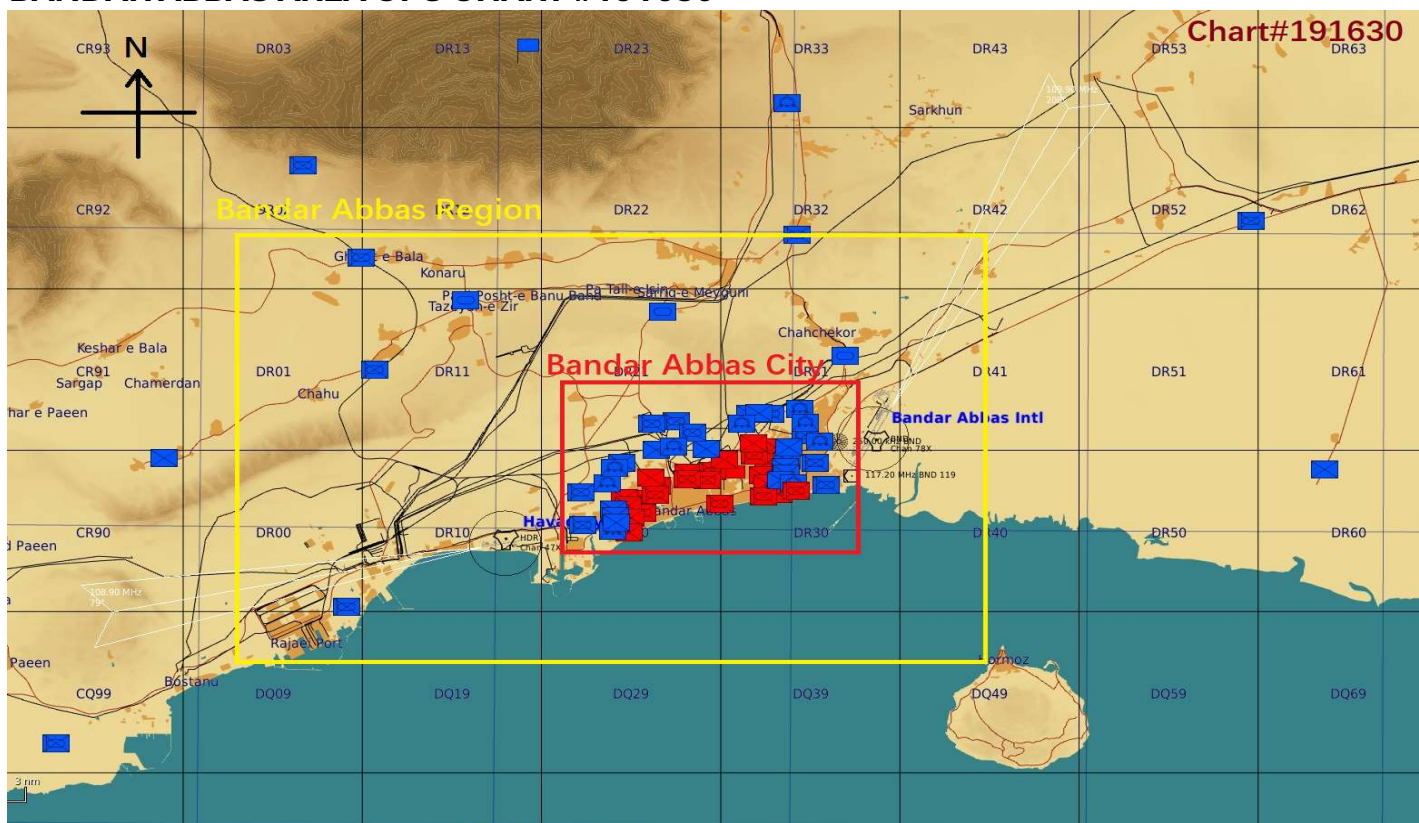
## GROUND OPERATION CHART



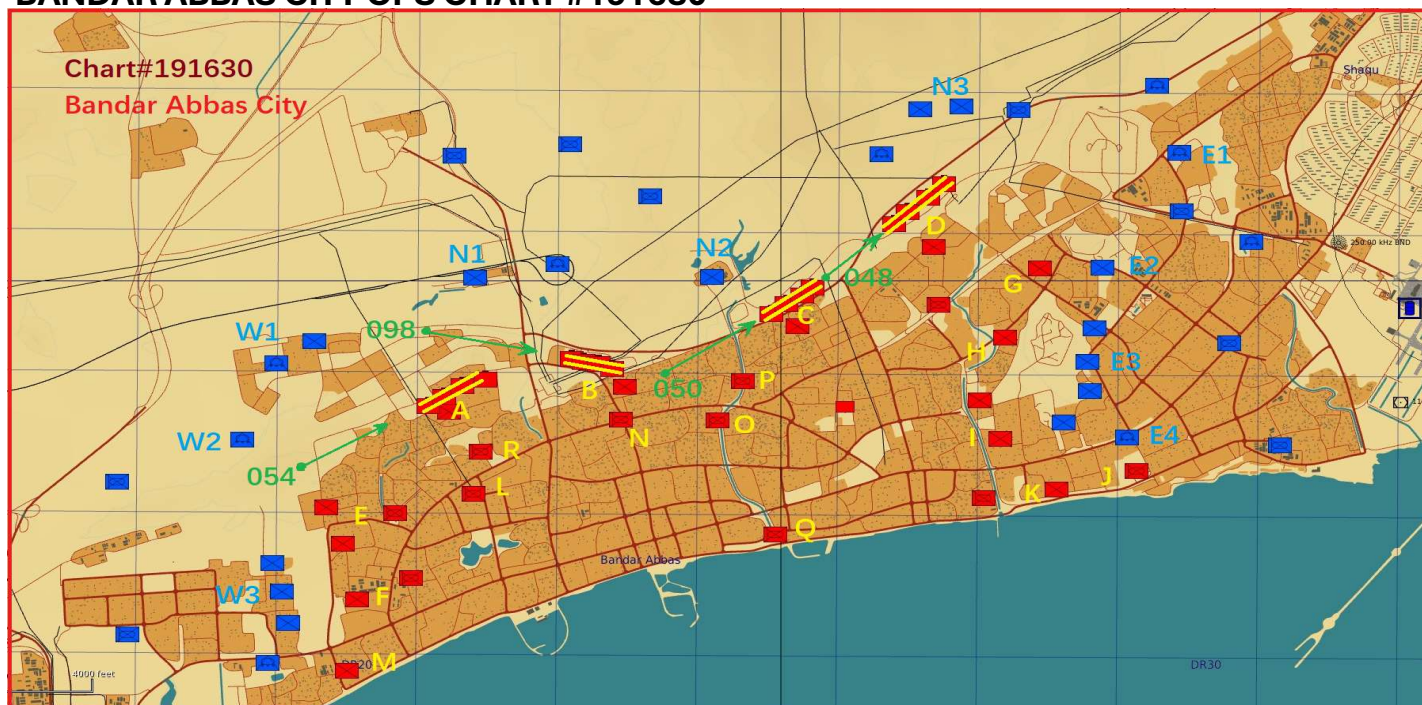




## BANDAR ABBAS AREA OPS CHART #191630



## BANDAR ABBAS CITY OPS CHART #191630



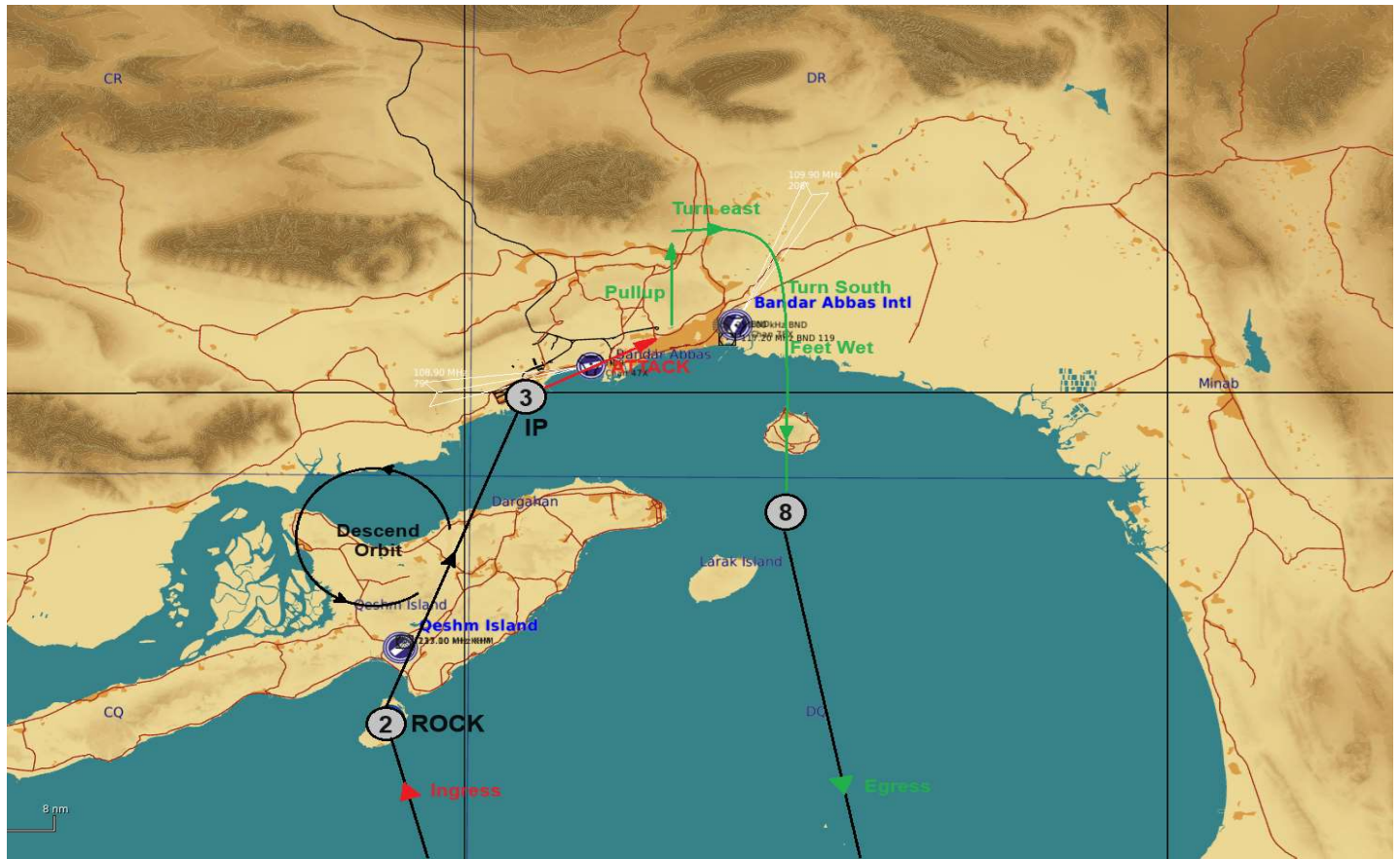
WP4: Position Alpha - Attacking course 054  
WP5: Position Bravo - Attacking course 098

WP6: Position Charlie - Attacking course 050  
WP7: Position Delta - Attacking course 048





## ATTACK PLAN



## DEFENSIVE STRONGHOLD POSITIONS SATELLITE IMAGE

